

TRESNA®

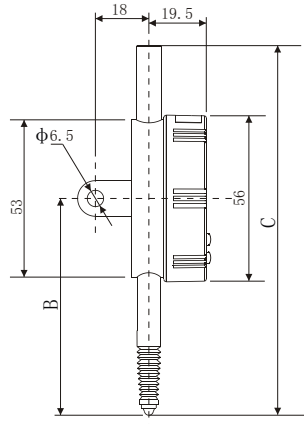
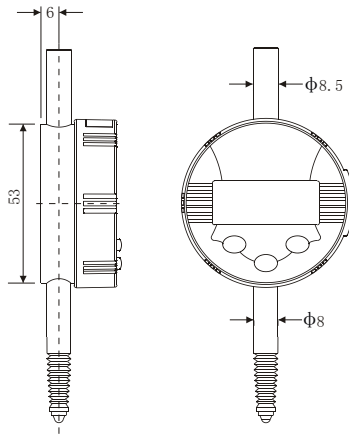
量具.量仪.综合样本.2008
Measuring Instrument CATALOG 2008



广陆数字测控股份有限公司

GUANGLU MEASURING INSTRUMENT CO.,LTD.

www.TresnaInstrument.com



D为带耳后盖
D(With Back Lug)

主要特点:

- 大型易读的液晶显示屏
- 测量单位转换
- 任意位置清零
- 带数据输出
- 数据保持
- 快速寻找测量中的最大、最小值
- 自动断电功能

FEATURES

- Large, easy-to-read LCD
- mm/inch conversion at any position
- Zero-setting at any position
- Data output
- Holding measured display values
- Fast tracing MAX / MIN value during measurement
- Automatic power off

货号 Order No.	量程 Measuring Range mm	分辨力 Resolution mm/inch	允许误差 Permissible Error mm	测量力 Measuring Force N	B mm	C mm	防护等级 Protection level
312-102-20	12.7	0.01/.0005"	±0.03	≤2.2N	68	119	IP42
312-602-20	12.7	0.01/.0005"	±0.03	≤2.2N	73	125	IP65
314-102-20	12.7	0.001/.00005"	±0.01	≤2.2N	68	119	IP42
314-602-20	12.7	0.001/.00005"	±0.01	≤2.2N	73	125	IP65

注：英寸仅供合资企业及出口使用

M

主要特点:

- 防水防尘
- 设有电源开关
- 在任意位置置零
- 单位转换
- 可预置数
- 可数据保持
- 快速显示
- 寻找并保存最大、最小值
- 两种计数状态: 正向和反向
- 有数据输出口

FEATURES

- Water and dust proof
- Power on/off
- Zero setting at any position
- mm/inch conversion
- Presetting display values
- Holding measured display values
- Fast displaying values
- Reversal point search for max/min memory
- Measuring direction conversion (inside switch)
- Data output



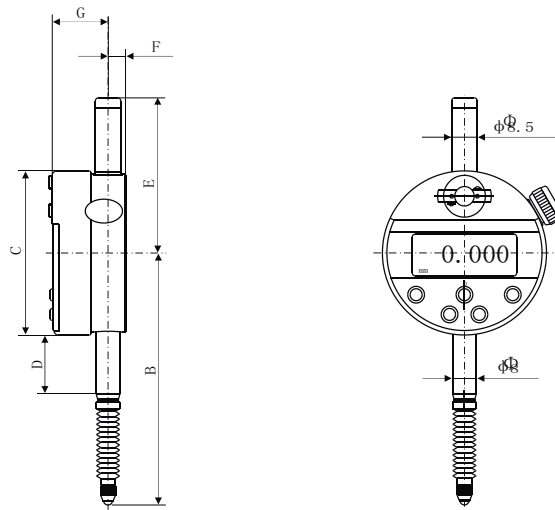
312-802B



312-011B



314-802B



货号 Order No.	量程 Measuring Range mm	分辨力 Resolution mm/inch	允许误差 Permissible Error mm	测量力 Measuring Force N	B	C	D	E	F	G	备注 Remarks
314-801A	6.5	0.001/.00005"	±0.007	≤1.5N	64.5	φ44	15.5	41.5	8.9	25.7	(SXB153A)
314-802B	12.7	0.001/.00005"	±0.01	≤2.2N	82.5	φ55	19.5	54	6	24.7	(SXB151A)
314-802C	12.7	0.001/.00005"	±0.01	≤2.2N	70	φ55	19.6	52	6	24.7	(SXB152A)
312-010A	6.5	0.005/.0002"	±0.015	≤1.5N	64.5	φ44	15.5	41.5	8.9	25.7	(SXB254AG)
312-011B	12.7	0.005/.0002"	±0.015	≤2.2N	82.5	φ55	19.5	54	6	24.7	(SXB251AG)
312-011C	12.7	0.005/.0002"	±0.015	≤2.2N	70	φ55	19.6	52	6	24.7	(SXB253AG)
312-801A	6.5	0.01/.0005"	±0.02	≤1.5N	64.5	φ44	15.5	41.5	8.9	25.7	(SXB254A)
312-802B	12.7	0.01/.0005"	±0.03	≤2.2N	82.5	φ55	19.5	54	6	24.7	(SXB251A)
312-802C	12.7	0.01/.0005"	±0.03	≤2.2N	70	φ55	19.6	52	6	24.7	(SXB253A)

注: 英寸仅供合资企业及出口使用
带C为半密封, 其它为全密封。





TOL/ABS

主要特点:

- 防水防尘
- 设有电源开关
- 在任意位置置零
- 可单位转换
- 两种测量方法: 绝对和相对
- 可设置公差值, 测量时作偏差状态判断
- 两种计数状态: 正向和反向
- 有数据输出口

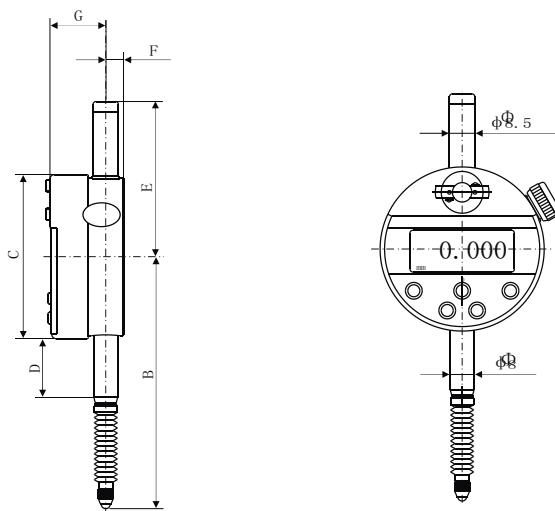
FEATURES

- Water and dust proof
- Power on/off
- Zero setting at any position
- mm/inch conversion
- Absolute and Increase measurements
- Tolerance setting and OK (Go) or \pm NG discrimination
- Measuring direction conversion (inside switch)
- Data output

312-802

312-011

314-802



货号 Order No	量程 Measuring Range mm	分辨力 Resolution mm/inch	允许误差 Permissible Error mm	测量力 Measuring Force N	B mm	C mm	D mm	E mm	F mm	G mm	备注 Remarks
314-801	6.5	0.001/.00005"	± 0.007	$\leq 1.5N$	64.5	$\phi 44$	15.5	41.5	8.9	25.7	(SXB153A)
314-802	12.7	0.001/.00005"	± 0.01	$\leq 2.2N$	82.5	$\phi 55$	19.5	54	6	24.7	(SXB151A)
314-802A	12.7	0.001/.00005"	± 0.01	$\leq 2.2N$	70	$\phi 55$	19.6	52	6	24.7	(SXB152A)
312-010	6.5	0.005/.0002"	± 0.015	$\leq 1.5N$	64.5	$\phi 44$	15.5	41.5	8.9	25.7	(SXB254AG)
312-011	12.7	0.005/.0002"	± 0.015	$\leq 2.2N$	82.5	$\phi 55$	19.5	54	6	24.7	(SXB251AG)
312-011A	12.7	0.005/.0002"	± 0.015	$\leq 2.2N$	70	$\phi 55$	19.6	52	6	24.7	(SXB253AG)
312-801	6.5	0.01/.0005"	± 0.02	$\leq 1.5N$	64.5	$\phi 44$	15.5	41.5	8.9	25.7	(SXB254A)
312-802	12.7	0.01/.0005"	± 0.03	$\leq 2.2N$	82.5	$\phi 55$	19.5	54	6	24.7	(SXB251A)
312-802A	12.7	0.01/.0005"	± 0.03	$\leq 2.2N$	70	$\phi 55$	19.6	52	6	24.7	(SXB253A)

注: 英寸仅供合资企业及出口使用

带A为半密封, 其它为全密封。

主要特点:

- 大型易读的液晶显示屏
- 任意位置测量单位转换
- 任意位置清零
- 带数据输出
- 数据保持
- 快速寻找测量中的最大、最小值
- 自动断电功能

FEATURES

- Large, easy-to-read LCD
- mm/inch conversion
- Zero-setting at any position
- Data output
- Holding measured display values
- Fast tracing MAX / MIN value during measurement
- Automatic power off



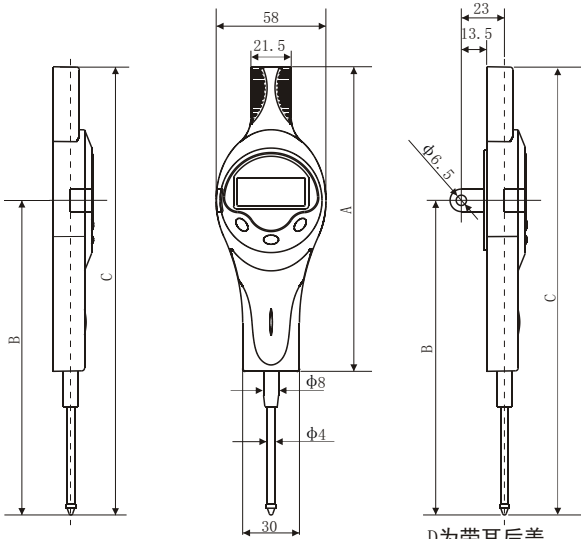
312-105-10B



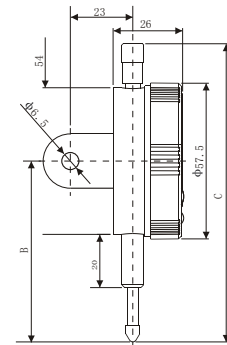
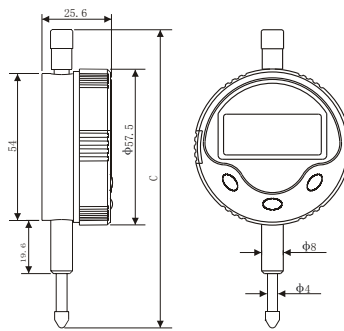
312-101-10B



312-1003-10B



D为带耳后盖
D(With Back Lug)



D为带耳后盖
D(With Back Lug)

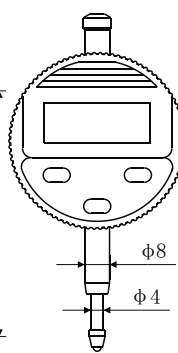
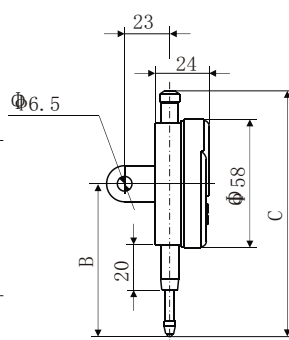
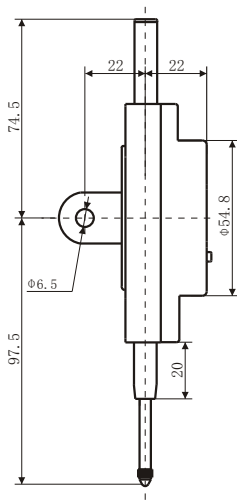
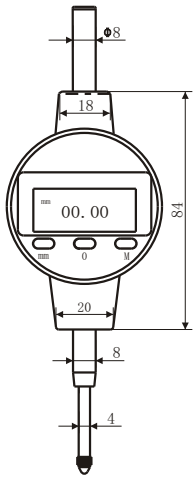
货号 Order No.	量程 Measuring Range mm	分辨率 Resolution mm/inch	允许误差 Permissible Error mm	测量力 Measuring Force N	A mm	B mm	C mm
312-101-10A 312-101-10DA	10	0.01/.0005"	±0.02	≤1.5		68	110
312-103-10B 312-103-10DB	30	0.01/.0005"	±0.03	≤2.2	122	128	179
312-105-10A 312-105-10DA	50	0.01/.0005"	±0.03	≤2.5	162	168	239
312-000-10B 312-000-10DB	10	0.005/.00025"	±0.015	≤1.5		68	110
312-001-10A 312-001-10DA	15	0.005/.00025"	±0.015	≤2.2		73	115
314-162-10B 314-162-10DB	10	0.001/.00005"	±0.007	≤1.5		68	110
314-162-10-1A 314-162-10-1DA	10	0.001/.00005"	±0.007	≤1.5		68	110
314-163-10B 314-163-10DB	15	0.001/.00005"	±0.01	≤2.2		73	115

注: 英寸仅供合资企业及出口使用

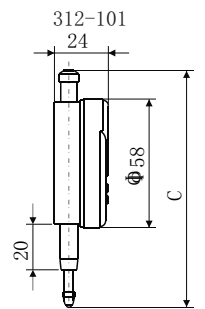


DIGITAL INDICATOR

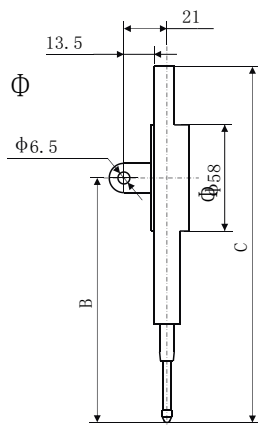
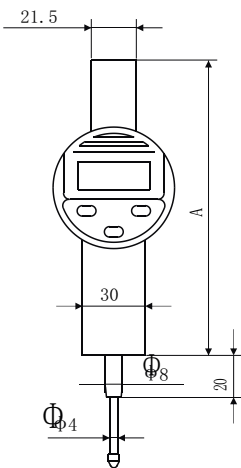
TRESNA®



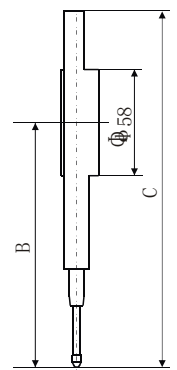
D为带耳后盖
D(With Back Lug)



312-102G



D为带耳后盖
D(With Back Lug)



312-105

312-103



312-001



312-101-JD



312-101-JDA



金属罩壳
Metal Casing
312-101GA



金属罩壳
Metal Casing
312-101GB

主要特点:

- 大型高清晰度LCD显示
- 任意位置测量单位转换
- 任意位置清零
- 带数据输出
- 数据保持
- 快速寻找测量中的最大、最小值
- 自动断电功能

FEATURES

- Large, easy-to-read LCD
- mm/inch conversion
- Zero-setting at any position
- Data output
- Holding measured display values
- Fast tracing MAX / MIN value during measurement
- Automatic power off

货号 Order No.	分辨率 Resolution mm/inch	量程 Measuring Range mm	允许误差 Permissible Error mm	测量力 Measuring Force N	
312-101	312-101D	0.01/.0005"	10	±0.02	≤1.5
312-102G		0.01/.0005"	25	±0.03	≤2.2
312-103	312-103D	0.01/.0005"	30	±0.03	≤2.2
312-105	312-105D	0.01/.0005"	50	±0.03	≤2.5
312-101GA	312-101GAD	0.01/.0005"	10	±0.02	≤1.5
312-102GA	312-102GAD	0.01/.0005"	12.7	±0.03	≤2.2
312-103GA	312-103GAD	0.01/.0005"	25.4	±0.03	≤2.2
312-101GB	312-101GBD	0.01/.0005"	10	±0.02	≤1.5
312-102GB	312-102GBD	0.01/.0005"	12.7	±0.03	≤2.2
312-103GB	312-103GBD	0.01/.0005"	25.4	±0.03	≤2.2
312-101-JD		0.01/.0005"	12.7	±0.03	≤2.2
312-103-JD		0.01/.0005"	25.4	±0.03	≤2.2
314-160-JD		0.001/.00005"	5	±0.007	≤1.5
314-162-JD		0.001/.00005"	12.7	±0.01	≤2.2
314-163-JD		0.001/.00005"	25.4	±0.01	≤2.2

注: 英寸仅供合资企业及出口使用 D为带耳后盖 D(With Back Lug)

货号 Order No.	分辨率 Resolution mm/inch	量程 Measuring Range mm	允许误差 Permissible Error mm	测量力 Measuring Force N	备注 Remarks	
312-101-JDA	0.01/.0005"	12.7	±0.03	≤2.2	多功能 Multi-function	
312-103-JDA	0.01/.0005"	25.4	±0.03	≤2.2		
314-160-JDA	0.001/.00005"	5	±0.007	≤1.5		
314-162-JDA	0.001/.00005"	12.7	±0.01	≤2.2		
314-163-JDA	0.001/.00005"	25.4	±0.01	≤2.2		
312-000	312-000D	0.005/.0002"	10	±0.015		≤1.5
312-001	312-001D	0.005/.0002"	15	±0.015		≤2.2
314-160	314-160D	0.001/.00005"	5	±0.007		≤1.5
314-161	314-161D	0.001/.00005"	6	±0.007		≤1.5
314-162	314-162D	0.001/.00005"	10	±0.007		≤1.5
314-162-1	314-162-1D	0.001/.00005"	10	±0.007		≤1.5
314-163	314-163D	0.001/.00005"	15	±0.01		≤2.2

注: 英寸仅供合资企业及出口使用 D为带耳后盖 D(With Back Lug)

314-160\160D\161\161D\162-1\162-1D\带提升线(With lifting cable)





主要特点:

- 防水防尘
- 设有电源开关
- 在任意位置置零
- 可单位转换
- 两种测量方法: 绝对和相对
- 可设置公差值, 测量时作偏差状态判断
- 两种计数状态: 正向和反向
- 有数据输出口

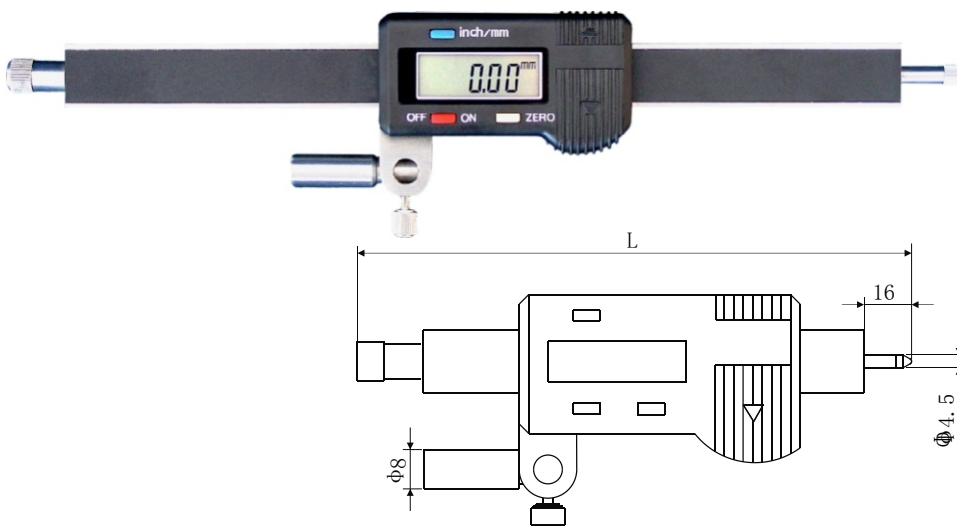
FEATURES

- Water and dust proof
- Power on/off
- Zero setting at any position
- mm/inch conversion
- Absolute and incremental measurements
- Tolerance setting and OK(Go) or \pm NG discrimination
- Measuring direction conversion (inside switch)
- Data output

货号 Order No.	量程 Measuring Range mm	分辨率 Resolution mm/inch	允许误差 Permissible Error mm	测量力 Measuring Force N
312-101A	12.7	0.01/.0005"	± 0.03	≤ 2.2
312-101B	12.7	0.01/.0005"	± 0.03	≤ 2.2
312-101C	12.7	0.01/.0005"	± 0.03	≤ 2.2

注: 英寸仅供合资企业及出口使用

方(矩形)数显指示表 RECTANGLE DIGITAL INDICATORS



主要特点:

- 装夹结构方便可靠
- 带电源开关
- 测量单位转换
- 任意位置清零
- 带数据输出

FEATURES

- Easy to clamp
- Power on/off
- mm/inch conversion
- Zero-setting at any position
- Data output

货号 Order No.	量程 Measuring Range mm	分辨率 Resolution mm/inch	允许误差 Permissible Error mm	L mm	测量力 Measuring Force N
311-101	10	0.01/.0005"	± 0.02	98	≤ 1.5
311-102	20	0.01/.0005"	± 0.03	108	≤ 2.2
311-103	30	0.01/.0005"	± 0.03	118	≤ 2.2
311-105	50	0.01/.0005"	± 0.03	148	≤ 2.5
311-110	100	0.01/.0005"	± 0.03	330	≤ 3.2

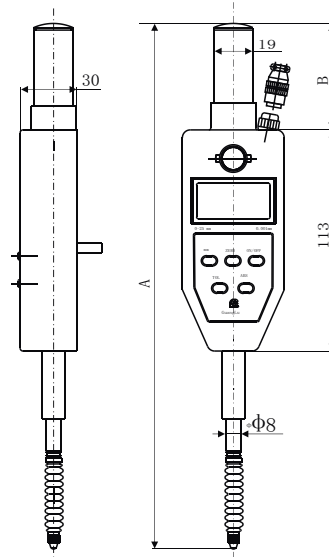
注: 英寸仅供合资企业及出口使用

主要特点:

- 设有电源开关
- 可任意置零
- 可单位转换
- 两种测量方法: 绝对和相对
- 可设置公差值, 测量时作偏差状态判断
- 有数据输出口
- 防水防尘
- 计数方向(±)可变换

FEATURES:

- Manual power on/off
- Zero setting at any position
- mm/inch conversion
- Absolute and incremental measurements
- Tolerance setting and OK(Go) or ± NG discrimination
- Data output
- Water and dust proof
- Measuring direction (±) conversion



312-810



货号 Order No.	量程 Measuring Range	分辨力 Resolution	允许误差 Permissible Error	测量力 Measuring Force	备注 Remarks	A	B
	mm	mm/inch	mm	N		mm	mm
312-805	25	0.01/.0005"	±0.03	≤3.5N	SXB260	222	53
312-810	50	0.01/.0005"	±0.04	≤4N	SXB270	328	85

注: 英寸仅供合资企业及出口使用

DIGITAL TEST INDICATORS

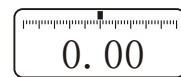
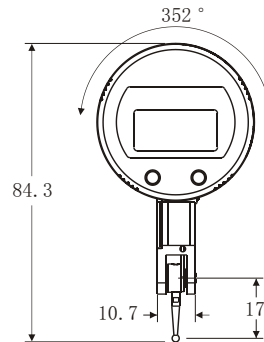
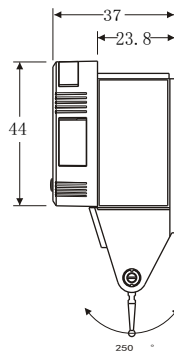
数显杠杆指示表

主要特点:

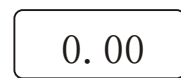
- 大型高清晰度 LCD 显示
- 有模拟显示和无模拟显示供选择
- 电源开关
- 公英制转换
- 任意位置清零
- 显示最大 / 最小 / 最大 - 最小
- USB 数据接口输出
- 罩壳和显示部分可旋转 352°
- HOLD 功能: 保持当前测量值

FEATURES

- Large and clear LCD display
- Digital analog display and non-analog display are optional
- Power on/off
- mm/inch conversion
- Zero-setting of display at any position
- Max/Min/Max-Min Memory
- USB data output
- Housing and display section can be rotated through 352°
- Housing and display section can be rotated through 352°



310-101A



310-101B

货号 Order No.	量程 Measuring Range	分辨力 Resolution	允许误差 Permissible Error	备注 Remarks
	mm	mm/inch	mm	
310-101A	±0.5	0.01/.0005"	±0.03	模拟显示 analog display
310-101B	±0.5	0.01/.0005"	±0.03	无模拟显示 non-analog display

注: 英寸仅供合资企业及出口使用



主要特点:

- 数字和模拟显示
- 电源开/关
- 可单位转换
- 任意值预置
- 任意位置清零
- 绝对/相对测量
- 计数方向可逆
- 模拟显示分辨率切换
- 设置上/下极限值实现公差判别
- 显示最大/最小/最大-最小值
- HOLD功能: 保持当前测量值
- LOCK功能: 锁定按键以防无意修改
- 全双工Opto RS232C数据口
- 通过数据口可实现远程操作
- 功能和显示部分可旋转270°
- 容栅系统, 电池寿命长于4000h (2年)
- 最大测量速度大于1m/s

FEATURES

- Digital and analog bar display
- Manual power on/off
- Unit switching
- Set buttons can be used to enter any numerical values
- Zero setting of display at any position
- Absolute/Relative measuring
- Reversal of counting direction
- Analog div. switching
- Tolerance judgment can be performed by setting upper/lower limits
- Max/Min/Max-Min memory
- Storage of current measuring value
- Buttons can be locked to avoid inadvertent adjustment
- Full-duplex Opto RS232C data port
- Dial indicator can be operated by remote control via data port
- Function and display section can be rotated through 270°
- Capacitive measuring system, life of battery longer than 4000h (2 years)
- Max. measuring speed greater than 1m/s

货号 Order No.	分度值 Readings mm	测量范围 Measuring mm	允许误差 Permissible Error mm	模拟显示分辨率 Analog division mm
314-602	0.001	12.7	±0.005	0.01/0.001

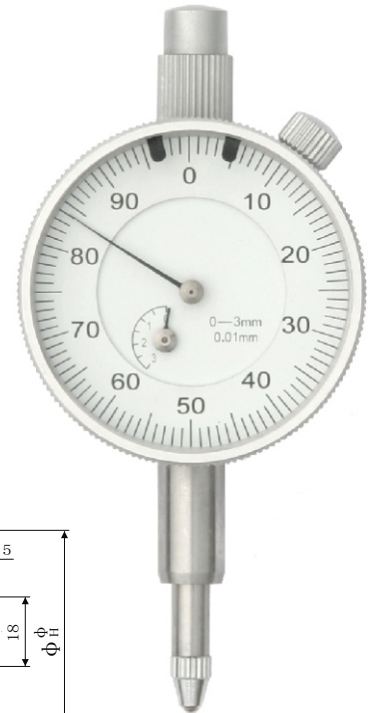
注: 英寸仅供合资企业及出口使用

DIAL GAUGES

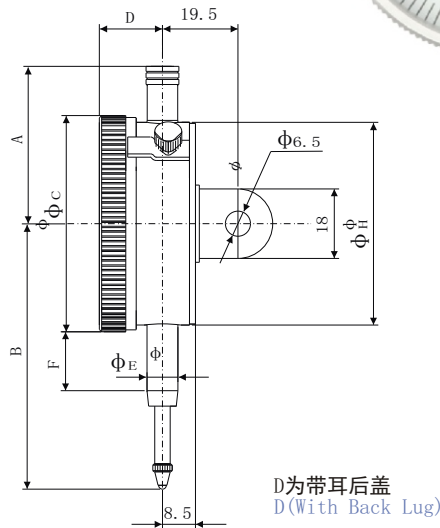
TRESNA®

RANGE 3mm READING IN 0.01mm

1. 铝壳体 (Aluminium shell)
2. 铝壳体喷漆 (Aluminium-shell lacquer cover)
3. 钢壳体镀铬 (Steel shell chromium cover)
4. 黑色表圈 (Black ring)
5. 不可动防尘帽 (Dustproof cap can not be moved)
6. 可动防尘帽 (Dustproof cap can be moved)
7. 止动压板 (Stop flat)
8. 内公差指示器 (Inside tolerance indicator)
9. 外公差指示器 (Outside tolerance indicator)
10. 防震 (Shock proof)
11. 带钻 (Jeweled)
12. 下轴套防水、防尘 (Lower part sleeve dustproof and waterproof)
13. 双面读数 (Double readout)
14. 转数指针在左上方 (Count pointer on left-above)
15. 带提升机构 (Elevator mechanism)
16. 无防尘帽 (Without dustproof cap)
17. 螺钉止动 (Stop screw)



321-111



货号 Order No.	A mm	B mm	ΦC mm	D mm	ΦE mm	F mm	ΦH mm
321-111	33.8	49	41	13	8	13	35
321-111-1	33.8	49	41	13	8	13	35
321-111-2	41	69	56	16	8	15.5	52.5

货号 Order No.	分度值 Readings mm	测量范围 Measuring mm	表盘读数 Dial reading mm	表圈外径 Ring diameter mm	采用标准 Used standard mm	备注 Remark
321-111	0.01	3	0-100	Φ41	GB	LB211(1.6.8.17)
321-111D	0.01	3	0-100	Φ41	GB	LB211(1.6.8.17)
321-111-1	0.01	3	0-50	Φ41	DIN	LB212(1.5.8.17.)
321-111-1D	0.01	3	0-50	Φ41	DIN	LB212(1.5.8.17.)
321-111-2	0.01	3	0-100	Φ56	GB	LB217(1.6.7.9.)
321-111-2D	0.01	3	0-100	Φ56	GB	LB217(1.6.7.9.)

DIAL GAUGES

TRESNA®

5mm量程百分表 RANGE 5mm READING IN 0.01mm



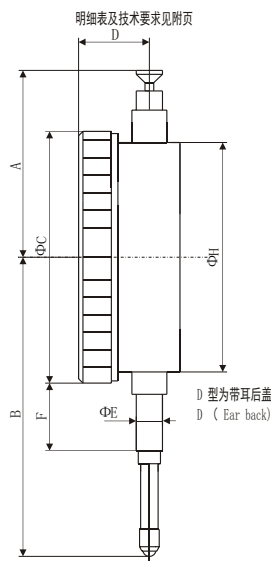
321-122-1LT

321-122-2LT



321-122-5LT

1. 铝壳体 (Aluminium shell)
2. 铝壳体喷漆 (Aluminium-shell lacquer cover)
3. 钢壳体镀铬 (Steel shell chromium cover)
4. 黑色表圈 (Black ring)
5. 不可动防尘帽 (Dustproof cap can not be moved)
6. 可动防尘帽 (Dustproof cap can be moved)
7. 止动压板 (Stop flat)
8. 内公差指示器 (Inside tolerance indicator)
9. 外公差指示器 (Outside tolerance indicator)
10. 防震 (Shock proof)
11. 带钻 (Jeweled)
12. 下轴套防水、防尘 (Lower part sleeve dust-proof and waterproof)
13. 双面读数 (Double readout)
14. 转数指针在左上方 (Count pointer on left-above)
15. 带提升机构 (Elevator mechanism)
16. 无防尘帽 (Without dustproof cap)
17. 螺钉止动 (Stop screw)



货号 Order No.	A mm	B mm	ΦC mm	D mm	ΦE mm	F mm	ΦH mm
321-122LT	35	54	43	14	8	15	
321-122-1LT	35	54	43	14	8	15	
321-122-2LT	35	54	43	14	8	15	
321-122-3LT	42	63.5	37.5	13.25	8	11.5	
321-122-4LT	42	63.5	37.5	13.25	8	11.5	40
321-122-5LT	42	61.5	61	15	8	17	

货号 Order No.	分度值 Readings mm	测量范围 Measuring mm	表盘读数 Dial reading mm	表圈外径 Ring diameter mm	采用标准 Used standard mm	备注 Remark
321-122LT	0.01	5	0-50	Φ43	UNI	SC405(2.)
321-122-1LT	0.01	5	0-100	Φ43	UNI	SC40(2.)
321-122-2LT	0.01	5	0-100	Φ43	UNI	SC40 ANT(2.10.)
321-122-3LT	0.01	5	0-100	Φ37.5	UNI	SC40 WA(2.12.)
321-122-4LT	0.01	5	0-100	Φ37.5	UNI	SC40 WAC/A(2.12.) 带盖 (eared back)
321-122-5LT	0.01	5	0-50	Φ61	UNI	SC605(2.)

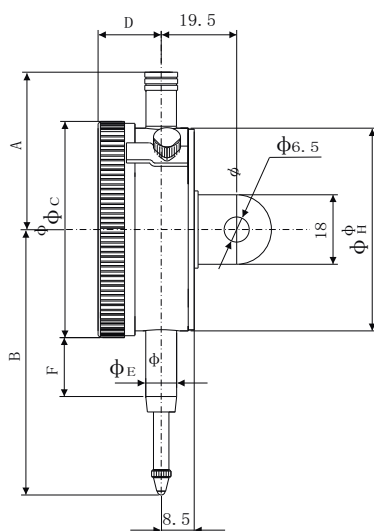
DIAL GAUGES

TRESNA®

RANGE 5mm READING IN 0.01mm

5mm量程百分表

1. 铝壳体 (Aluminium shell)
2. 铝壳体喷漆 (Aluminium-shell lacquer cover)
3. 钢壳体镀铬 (Steel shell chromium cover)
4. 黑色表圈 (Black ring)
5. 不可动防尘帽 (Dustproof cap can not be moved)
6. 可动防尘帽 (Dustproof cap can be moved)
7. 止动压板 (Stop flat)
8. 内公差指示器 (Inside tolerance indicator)
9. 外公差指示器 (Outside tolerance indicator)
10. 防震 (Shock proof)
11. 带钻 (Jeweled)
12. 下轴套防水、防尘 (Lower part sleeve dustproof and waterproof)
13. 双面读数 (Double readout)
14. 转数指针在左上方 (Count pointer on left-above)
15. 带提升机构 (Elevator mechanism)
16. 无防尘帽 (Without dustproof cap)
17. 螺钉止动 (Stop screw)



321-113



321-116



货号 Order No.	A mm	B mm	ΦC mm	D mm	ΦE mm	F mm	ΦH mm
321-116	49	69	55	14.5	8	15.5	54
321-113	33.8	49	41	13	8	13	35
321-130	41	69	58	16	8	15.5	52.5
321-130-1	41	69	56	16	8	15.5	52.5
321-122	36	69	55	14.5	8	15.5	52.5
321-122-1	45.5	69	58	16	8	15.5	52.5
321-113-1	33.8	51	41	14.5	8	14	35

货号 Order No.	分度值 Readings mm	测量范围 Measuring mm	表盘读数 Dial reading mm	表圈外径 Ring diameter mm	采用标准 Used standard mm	备注 Remark
321-116	0.01	5	0-100	$\Phi 55$	GB	LB222 (3. 4. 6. 7. 9. 12.)
321-116D	0.01	5	0-100	$\Phi 55$	GB	LB222 (3. 4. 6. 7. 9. 12.)
321-113	0.01	5	0-100	$\Phi 41$	GB	LB224 (1. 6. 8. 17.)
321-113D	0.01	5	0-100	$\Phi 41$	GB	LB224 (1. 6. 8. 17.)
321-130	0.01	5	0-100	$\Phi 58$	GB	LB224.5 (3. 6. 7. 8.)
321-130D	0.01	5	0-100	$\Phi 58$	GB	LB224.5 (3. 6. 7. 8.)
321-130-1	0.01	5	0-100	$\Phi 56$	GB	LB224.6 (1. 6. 9. 17.)
321-130-1D	0.01	5	0-100	$\Phi 56$	GB	LB224.6 (1. 6. 9. 17.)
321-122	0.01	5	0-100	$\Phi 55$	GB	LB224.7 (1. 4. 7. 9. 16.)
321-122D	0.01	5	0-100	$\Phi 55$	GB	LB224.7 (1. 4. 7. 9. 16.)
321-122-1	0.01	5	0-100	$\Phi 58$	DIN	LB224.8(3. 5. 7. 8. 10. 11.)
321-122-1D	0.01	5	0-100	$\Phi 58$	DIN	LB224.8(3. 5. 7. 8. 10. 11.)
321-113-1	0.01	5	0-100	$\Phi 41$	GB	LB226 (1. 6. 8. 14. 17.)
321-113-1D	0.01	5	0-100	$\Phi 41$	GB	LB226 (1. 6. 8. 14. 17.)

10mm量程百分表

RANGE 10mm READING IN 0.01mm

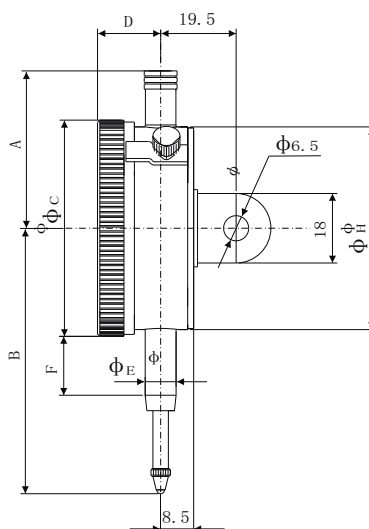


321-123-3



321-123-1

1. 铝壳体 (Aluminium shell)
2. 铝壳体喷漆 (Aluminium-shell lacquer cover)
3. 钢壳体镀铬 (Steel shell chromium cover)
4. 黑色表圈 (Black ring)
5. 不可动防尘帽 (Dustproof cap can not be moved)
6. 可动防尘帽 (Dustproof cap can be moved)
7. 止动压板 (Stop flat)
8. 内公差指示器 (Inside tolerance indicator)
9. 外公差指示器 (Outside tolerance indicator)
10. 防震 (Shock proof)
11. 带钻 (Jeweled)
12. 下轴套防水、防尘 (Lower part sleeve dust-proof and waterproof)
13. 双面读数 (Double readout)
14. 转数指针在左上方 (Count pointer on left-above)
15. 带提升机构 (Elevator mechanism)
16. 无防尘帽 (Without dustproof cap)
17. 螺钉止动 (Stop screw)



货号 Order No.	A mm	B mm	ΦC mm	D mm	ΦE mm	F mm	ΦH mm
321-123-4	40	69	55	14.5	8	15.5	52.5
321-123	36	69	55	14.5	8	15.5	52.5
321-123-1	49	69	55	14.5	8	15.5	52.5
321-123-2	49	69	55	14.5	8	15.5	52.5
321-123-3	36	69	55	14.5	8	15.5	52.5

货号 Order No.	分度值 Readings mm	测量范围 Measuring mm	表盘读数 Dial reading mm	表圈外径 Ring diameter mm	采用标准 Used standard mm	备注 Remark
321-123-4	0.01	10	0-100	Φ55	GB	LB236.2(1.4.9.17.)
321-123-4D	0.01	10	0-100	Φ55	GB	LB236.2(1.4.9.17.)
321-123	0.01	10	0-100	Φ41	GB	LB236.5(1.4.16.)
321-123D	0.01	10	0-100	Φ41	GB	LB236.5(1.4.16.)
321-123-1	0.01	10	0-100	Φ58	GB	LB236.6(1.4.5.7.9.)
321-123-1D	0.01	10	0-100	Φ58	GB	LB236.6(1.4.5.7.9.)
321-123-2	0.01	10	0-100	Φ56	GB	LB236.7(1.4.5.9.)
321-123-2D	0.01	10	0-100	Φ56	GB	LB236.7(1.4.5.9.)
321-123-3	0.01	10	0-100	Φ55	GB	LB236.8(1.4.7.9.16.)
321-123-3D	0.01	10	0-100	Φ55	GB	LB236.8(1.4.7.9.16.)

DIAL GAUGES

TRESNA®

RANGE 10mm READING IN 0.01mm

10mm量程百分表

1. 铝壳体 (Aluminium shell)
2. 铝壳体喷漆 (Aluminium-shell lacquer cover)
3. 钢壳体镀铬 (Steel shell chromium cover)
4. 黑色表圈 (Black ring)
5. 不可动防尘帽 (Dustproof cap can not be moved)
6. 可动防尘帽 (Dustproof cap can be moved)
7. 止动压板 (Stop flat)
8. 内公差指示器 (Inside tolerance indicator)
9. 外公差指示器 (Outside tolerance indicator)
10. 防震 (Shock proof)
11. 带钻石 (Diamond)
12. 下轴套防水、防尘 (Lower part sleeve dust-proof and waterproof)
13. 双面读数 (Double readout)
14. 转数指针在左上方 (Count pointer on left-above)
15. 带提升机构 (Elevator mechanism)
16. 无防尘帽 (Without dustproof cap)
17. 螺钉止动 (Stop screw)



321-123-LT



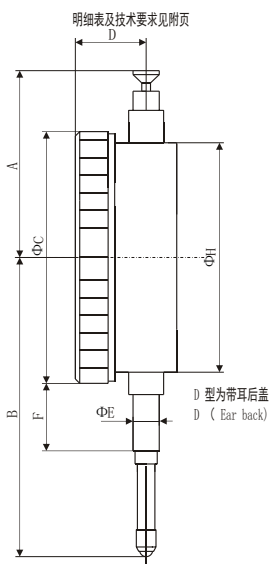
321-123-3LT



321-123-4LT



321-123-5LT



货号 Order No.	A mm	B mm	ΦC mm	D mm	ΦE mm	F mm	ΦH mm
321-123LT	44	68.5	58	17	8	14	52
321-123-1LT	44	68.5	58	17	8	14	52
321-123-2LT	44	66.5	58	16	8	14	52
321-123-3LT	44	66.5	58	16	8	14	52
321-123-4LT	41.5	68.5	60	14.7	8	13	
321-123-5LT	41.5	68.5	60	14.7	8	13	
321-123-6LT	49.5	78.4	62.5	13.8	8	12	
321-123-7LT	49.5	78.4	62.5	13.8	8	12	

货号 Order No.	分度值 Readings mm	测量范围 Measuring mm	表盘读数 Dial reading mm	表圈外径 Ring diameter mm	采用标准 Used standard mm	备注 Remark
321-123LT	0.01	10	0-100	Φ58	UNI	SC001 (2.)量杆可调整 Adjustable spindle
321-123-1LT	0.01	10	0-100	Φ58	UNI	SC001 ant (2. 10.)量杆可调整Adjustable spindle
321-123-2LT	0.01	10	0-100	Φ58	UNI	SC601 (2.)
321-123-3LT	0.01	10	0-100	Φ58	UNI	SC601 ANT (2. 10.)
321-123-4LT	0.01	10	0-100	Φ60	UNI	SC60 (2.)
321-123-5LT	0.01	10	0-100	Φ60	UNI	SC60 ANT (2. 10.)
321-123-6LT	0.01	10	0-100	Φ62.5	UNI	SC60 WA (2. 12.)
321-123-7LT	0.01	10	0-100	Φ62.5	UNI	SC60 WA C/A (2. 12.)

10mm量程百分表

RANGE 10mm READING IN 0.01mm



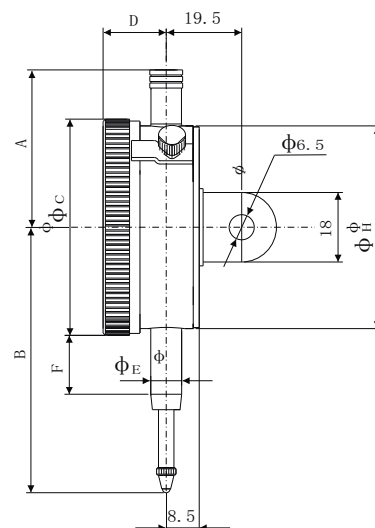
321-131



321-131-2



321-131-3



1. 铝壳体 (Aluminium shell)
2. 铝壳体喷漆 (Aluminium-shell lacquer cover)
3. 钢壳体镀铬 (Steel shell chromium cover)
4. 黑色表圈 (Black ring)
5. 不可动防尘帽 (Dustproof cap can not be moved)
6. 可动防尘帽 (Dustproof cap can be moved)
7. 止动压板 (Stop flat)
8. 内公差指示器 (Inside tolerance indicator)
9. 外公差指示器 (Outside tolerance indicator)
10. 防震 (Shock proof)
11. 带钻 (Jeweled)
12. 下轴套防水、防尘 (Lower part sleeve dust-proof and waterproof)
13. 双面读数 (Double readout)
14. 转数指针在左上方 (Count pointer on left-above)
15. 带提升机构 (Elevator mechanism)
16. 无防尘帽 (Without dustproof cap)
17. 螺钉止动 (Stop screw)

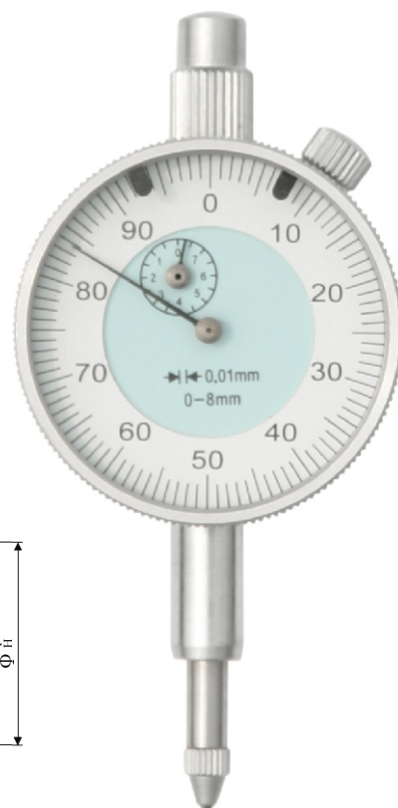
货号 Order No.	A mm	B mm	ΦC mm	D mm	ΦE mm	F mm	ΦH mm
321-131	41	69	56	16	8	15.5	52.5
321-131-1	41	69	56	16	8	15.5	52.5
321-131-2	41	69	56	16	8	15.5	52.5
321-131-4	41	69	56	16	8	15.5	52.5
321-131-5	41	69	56	16	8	15.5	52.5
321-131-3	41	69	56	16	8	15.5	52.5
321-131-6	35.5	71.5	56	16	10	12.5	52.5
321-130-2	47.5	69	56	16	8	16	52.5

货号 Order No.	分度值 Readings mm	测量范围 Measuring mm	表盘读数 Dial reading mm	表圈外径 Ring diameter mm	采用标准 Used standard mm	备注 Remark
321-131	0.01	10	0-100	Φ55	GB	LB238.1(1.6.9.17.)
321-131D	0.01	10	0-100	Φ55	GB	LB238.1(1.6.9.17.)
321-131-1	0.01	10	0-100	Φ41	DIN	LB238.2(2.)
321-131-1D	0.01	10	0-100	Φ41	DIN	LB238.2(2.)
321-131-2	0.01	10	0-100	Φ58	DIN	LB238.3(3.5.7.8.10.11.)
321-131-2D	0.01	10	0-100	Φ58	DIN	LB238.3(3.5.7.8.10.11.)
321-131-4	0.01	10	0-100	Φ56	GB	LB238.5A(3.6.7.8.12.)
321-131-4D	0.01	10	0-100	Φ56	GB	LB238.5A(3.6.7.8.12.)
321-131-5	0.01	10	0-100	Φ55	GB	LB238.5B(3.6.7.8.15.)
321-131-5D	0.01	10	0-100	Φ55	GB	LB238.5B(3.6.7.8.15.)
321-131-3	0.01	10	0-100	Φ55	GB	LB238.5(3.6.7.8.)
321-131-3D	0.01	10	0-100	Φ55	GB	LB238.5(3.6.7.8.)
321-131-6	0.01	10	0-100	Φ55	GB	LB238.6(1.9.16.17.)
321-131-6D	0.01	10	0-100	Φ55	GB	LB238.6(1.9.16.17.)
321-130-2	0.01	10	0-100	Φ55	DIN	LB238.8(3.5.7.8.)
321-130-2D	0.01	10	0-100	Φ55	DIN	LB238.8(3.5.7.8.)

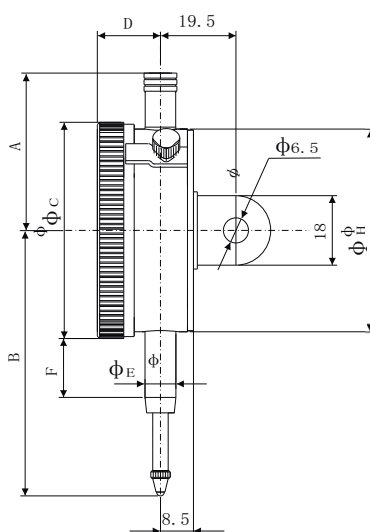
THE OTHER RANGE READING IN 0.01mm

其它量程百分表

- 1. 铝壳体 (Aluminium shell)
- 2. 铝壳体喷漆 (Aluminium-shell lacquer cover)
- 3. 钢壳体镀铬 (Steel shell chromium cover)
- 4. 黑色表圈 (Black ring)
- 5. 不可动防尘帽 (Dustproof cap can not be moved)
- 6. 可动防尘帽 (Dustproof cap can be moved)
- 7. 止动压板 (Stop flat)
- 8. 内公差指示器 (Inside tolerance indicator)
- 9. 外公差指示器 (Outside tolerance indicator)
- 10. 防震 (Shock proof)
- 11. 带钻 (J-eweled)
- 12. 下轴套防水、防尘 (Lower part sleeve dust-proof and waterproof)
- 13. 双面读数 (Double readout)
- 14. 转数指针在左上方 (Count pointer on left-above)
- 15. 带提升机构 (Elevator mechanism)
- 16. 无防尘帽 (Without dustproof cap)
- 17. 螺钉止动 (Stop screw)



321-115



货号 Order No.	A mm	B mm	ΦC mm	D mm	ΦE mm/inch	F mm	ΦH mm
321-112	29	46.5	41	13.5	8	10.5	35
321-202	37.5	60	58	16	3/8"	15	52
321-114	33.8	49	41	13	8	13	35
321-115	33.8	50.7	41	13	8	13	35
321-231	40	85.5	60	16	3/8"	17.6	53
321-232	40	72	60	16	3/8"	17.6	53
321-211	33.8	49	41	13	3/8"	13	35
321-235-1	40	60	60	16	3/8"	17.6	53

货号 Order No.	分度值 Readings mm	测量范围 Measuring mm	表盘读数 Dial reading mm	表圈外径 Ring diameter mm	采用标准 Used standard mm	备注 Remark
321-112	0.01	4	0-100	Φ41	GB	LB227(1.8.13.16.)
321-112D	0.01	4	0-100	Φ41	GB	LB227(1.8.13.16.)
321-202	0.01	6	0-100	Φ58	英制表标准	LB238.7(3.5.7.)下轴套Φ9.25(Lower part sleeve diameter)
321-202D	0.01	6	0-100	Φ58	英制表标准	LB238.7(3.5.7.)下轴套Φ9.25(Lower part sleeve diameter)
321-114	0.01	7	0-100	Φ41	GB	LB237(1.6.8.17.)
321-114D	0.01	7	0-100	Φ41	GB	LB237(1.6.8.17.)
321-115	0.01	8	0-100	Φ41	GB	LB231(1.6.8.14.17.)
321-115D	0.01	8	0-100	Φ41	GB	LB231(1.6.8.14.17.)
321-231	.001"	.25"	0-100	Φ2.362"	英制表标准	LB260.7(1.9.16.17.)
321-231D	.001"	.25"	0-100	Φ2.362"	英制表标准	LB260.7(1.9.16.17.)
321-232	.0005"	.25"	0-100	Φ2.362"	英制表标准	LB262(1.9.16.17.)
321-232D	.0005"	.25"	0-100	Φ2.362"	英制表标准	LB262(1.9.16.17.)
321-211	.001"	.25"	0-100	Φ1.614"	英制表标准	LB260.4(1.6.8.17.)
321-211D	.001"	.25"	0-100	Φ1.614"	英制表标准	LB260.4(1.6.8.17.)
321-235-1	.001"	.1"	0-100	Φ2.362	英制表标准	LB260.4A(1.6.8.17.)
321-235-1D	.001"	.1"	0-100	Φ2.362	英制表标准	LB260.4A(1.6.8.17.)

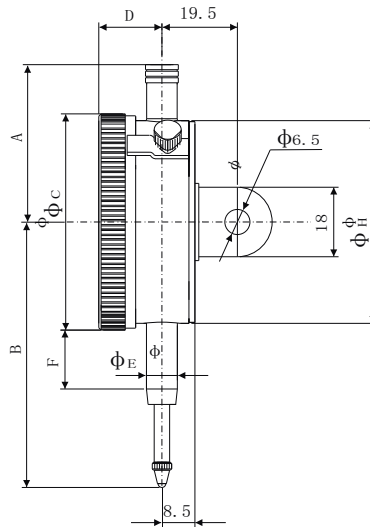
DIAL GAUGES

TRESNA®

全齿轮式千分表 TOTAL GEARS TYPE DIAL GAUGE READING IN 0.001mm



320-162



主要特点:

- 全齿轮式传动系统
- 提高了测量精度
- 带钻防震
- 带帽防尘

FEATURES:

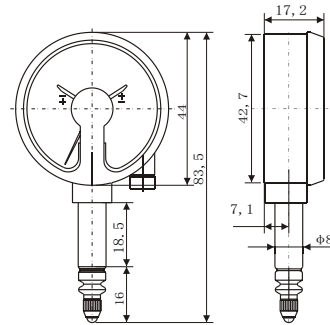
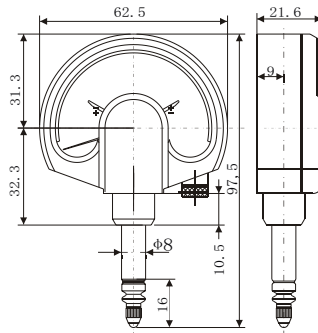
- Total gear-driven system
- High precision
- Jeweled and shock-proof
- Dustproof cap



货号 Order No.	分度值 Readings mm	测量范围 Measuring mm	表盘读数 Dial reading mm	表圈外径 Ring diameter mm	采用标准 Used standard mm	备注 Remark
320-162	0.001	1	0-100	Φ55	GB	LB112(1.6.17.)
320-162D	0.001	1	0-100	Φ55	GB	LB112A(1.6.12)

1. 铝壳体 (Aluminium shell) 2. 铝壳体喷漆 (Aluminium shell lacquer cover) 3. 钢壳体镀铬 (Steel shell chromium cover) 4. 黑色表圈 (Black ring) 5. 不可动防尘帽 (Dustproof cap can not be moved) 6. 可动防尘帽 (Dustproof cap can be moved) 7. 止动压板 (Stop flat) 8. 内公差指示器 (Inside tolerance indicator) 9. 外公差指示器 (Outside tolerance indicator) 10. 防震 (Shock proof) 11. 带钻 (Jeweled) 12. 下轴套防水、防尘 (Lower part sleeve dustproof and waterproof) 13. 双面读数 (Double readout) 14. 转数指针在左上方 (Count pointer on left-above) 15. 带提升机构 (Elevator mechanism) 16. 无防尘帽 (Without dustproof cap) 17. 螺钉止动 (Stop screw)

杠杆齿轮比较仪 MECHANICAL DIAL COMPARATORS



主要特点:

- 高准确度 (7钻)
- 防震
- 防水防尘
- 读数方便
- 有微调机构
- 快门线提升测轴

FEAUTRES:

- High accuracy (Rubies 7)
- Shockproof
- Waterproof、dustproof
- Easy to read
- Easy fine adjustment
- Shutter line lift the measuring spindle

货号 Order No.	分度值 Readings mm	测量范围 Measuring mm	表盘读数 Dial reading mm	采用标准 Used standard	备注 Remark
320-105	0.001	±0.05	50-0-50	GB	LB101
320-105A	0.001	±0.05	50-0-50	GB	Lb110

1. 铝壳体 (Aluminium shell) 2. 铝壳体喷漆 (Aluminium shell lacquer cover) 3. 钢壳体镀铬 (Steel shell chromium cover) 4. 黑色表圈 (Black ring) 5. 不可动防尘帽 (Dustproof cap can not be moved) 6. 可动防尘帽 (Dustproof cap can be moved) 7. 止动压板 (Stop flat) 8. 内公差指示器 (Inside tolerance indicator) 9. 外公差指示器 (Outside tolerance indicator) 10. 防震 (Shock proof) 11. 带钻 (Jeweled) 12. 下轴套防水、防尘 (Lower part sleeve dustproof and waterproof) 13. 双面读数 (Double readout) 14. 转数指针在左上方 (Count pointer on left-above) 15. 带提升机构 (Elevator mechanism) 16. 无防尘帽 (Without dustproof cap) 17. 螺钉止动 (Stop screw)

主要特点:

- 可以准确方便的测量狭长和凹进面，及难以测量的内外直径尺寸
- 采用特殊装置实现测量方向的自动换向
- 采用8钻，具有高灵敏度和快速响应
- 多种材料测头供选择（淬硬钢、硬质合金、宝石）
- $\Phi 6h7$ 的夹环柄为选购件

FEATURES

- Performs easy and accurately measurement of narrow or recessed areas and inside and outside diameters that measured difficultly
- Special structure for automatic reversal of measuring direction
- High-sensibility and quick-response (8jeweled)
- Contact points made of various materials are optional (steel hardened, carbide, jewel)
- Stem of clamp ring (6h7) is optional



322-211



322-213



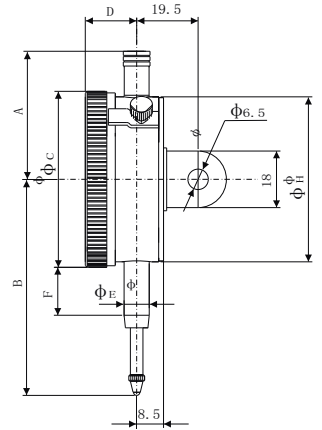
322-213LT

货号 Order No.	分度值 Readings	测量范围 Measuring mm/inch	表盘读数 Dial reading	表圈外径 Ring diameter	采用标准 Used standard	备注 Remark	测杆长 MEASURING SPINDLE mm
322-001	0.002	0.2	0-100-0	$\Phi 38$ $\Phi 32$ $\Phi 28$	GB	LB411(1.)	14.7
322-213	0.01	0.8	0-40-0	$\Phi 38$ $\Phi 32$ $\Phi 28$	GB	LB431(1.)	15.7
322-011	0.002	0.2	0-100-0	$\Phi 38$	GB	LB413A(3.)	16
322-012	0.002	0.2	0-100-0	$\Phi 32$	GB	LB414A(3.)	16
322-211	0.01	0.8	0-40-0	$\Phi 38$	GB	LB433A(3.)	20
322-212	0.01	0.8	0-40-0	$\Phi 32$	GB	LB434A(3.)	20
322-021	0.002	0.2	0-100-0	$\Phi 38$	GB	LB413H(1.)	16
322-022	0.002	0.2	0-100-0	$\Phi 32$	GB	LB414H(1.)	16
322-221	0.01	0.8	0-40-0	$\Phi 38$	GB	LB433H(1.)	20
322-223	0.01	0.8	0-40-0	$\Phi 32$	GB	LB434H(1.)	20
322-301	.0001"	.008"	0-4-0	$\Phi 38$ $\Phi 32$ $\Phi 28$	英制表标准	LB460(1.)	14.7
322-311	.0005"	.03"	0-15-0	$\Phi 38$ $\Phi 32$ $\Phi 28$	英制表标准	LB470(1.)	15.7
322-213LT	0.01	0.8	0-40-0	$\Phi 29$	UNI	SC20(2.)	11.25

DIAL GAUGES

TRESNA®

大量程百分表 LONG SPAN DIAL GAUGES IN 0.01mm



321-132 321-133 321-133-1LT 321-134 321-141

货号 Order No.	A mm	B mm	ΦC mm	D mm	ΦE mm/inch	F mm	ΦH mm
321-132	40	85	60	16	8		53
321-133	40	85	60	16	8		53
321-133-1LT	10	81.5	58	17	8	17	53
321-134	44.5	90	60	16	8	18	53
321-141	50	129.5	80	16	8	30.5	75
321-142	124	142	60	16	3/8"	44	53
321-143	163	213.5	80	17	8	104	56
321-233	40	68	60	16	3/8"	17	53
321-234	40	68	60	16	3/8"	17	53
321-234-1	47.5	18.5	56	16	3/8"	15	50
321-235	40	81.5	60	16	3/8"	17	53
321-236	40	81.5	60	16	3/8"	17	53
321-233	40	81.5	60	16	3/8"	17	53
321-237	124	142	60	16	3/8"	44	53
321-237-1	124	142	60	16	3/8"	44	53

货号 Order No.	分度值 Readings	测量范围 Measuring mm	表盘读数 Dial reading mm	表圈外径 Ring diameter mm	采用标准 Used standard mm	备注 Remark
321-132	0.01	20	0-100	Φ60	GB	LB240.1(1.9.16.17)
321-132D	0.01	20	0-100	Φ60	GB	LB240.1(1.9.16.17)
321-133	0.01	25	0-100	Φ60	GB	LB240.3(1.9.16.17)
321-133D	0.01	25	0-100	Φ60	GB	LB240.3(1.9.16.17)
321-133-1LT	0.01	25	0-100	Φ58	UNT	SC25(2.)
321-134	0.01	30	0-100	Φ60	GB	LB256.5(1.9.16.17)
321-134D	0.01	30	0-100	Φ60	GB	LB256.5(1.9.16.17)
321-141	0.01	50	0-100	Φ80	GB	LB252.1(1.9.10.16.17)
321-141D	0.01	50	0-100	Φ80	GB	LB252.1(1.9.10.16.17)
321-142	0.01	50	0-100	Φ60	GB	LB252(1.5.9.10.17.)下轴套(Lower part sleeve diameter) φ 9.25mm
321-142D	0.01	50	0-100	Φ60	GB	LB252(1.5.9.10.17.)下轴套(Lower part sleeve diameter) φ 9.25mm
321-143	0.01	100	0-100	Φ80	GB	LB252.4
321-143D	0.01	100	0-100	Φ80	GB	LB252.4
321-233	.001"	.5"	0-100	Φ2.362"	英制表标准	LB270.7(1.9.16.17.)
321-233D	.001"	.5"	0-100	Φ2.362"	英制表标准	LB270.7(1.9.16.17.)
321-234	.0005"	.5"	0-100	Φ2.362"	英制表标准	LB271(1.9.16.17.)
321-234D	.0005"	.5"	0-100	Φ2.362"	英制表标准	LB271(1.9.16.17.)
321-234-1	.001"	.5"	0-100	Φ2.165"	英制表标准	LB272(3.5.7.8.)反读数 (Reversed reading)
321-234-1D	.001"	.5"	0-100	Φ2.165"	英制表标准	LB272(3.5.7.8.)反读数 (Reversed reading)
321-235	.001"	.1"	0-100	Φ2.362"	英制表标准	LB280.7(1.9.16.17.)
321-235D	.001"	.1"	0-100	Φ2.362"	英制表标准	LB280.7(1.9.16.17.)
321-236	.0005"	.1"	0-100	Φ2.362"	英制表标准	LB281(1.9.16.17.)
321-236D	.0005"	.1"	0-100	Φ2.362"	英制表标准	LB281(1.9.16.17.)
321-223	.001"	.1"	0-100	Φ2.362"	英制表标准	LB280.5(1.4.5.7.9.)
321-223D	.001"	.1"	0-100	Φ2.362"	英制表标准	LB280.5(1.4.5.7.9.)
321-237	.001"	.2"	0-100	Φ2.362"	英制表标准	LB290(1.5.9.17.)
321-237D	.001"	.2"	0-100	Φ2.362"	英制表标准	LB290(1.5.9.17.)
321-237-1	.001"	.2"	0-100	Φ2.362"	英制表标准	LB290.1(1.5.7.)双指针 (Double pointers)
321-237-1D	.001"	.2"	0-100	Φ2.362"	英制表标准	LB290.1(1.5.7.)双指针 (Double pointers)

1. 铝壳体 (Aluminium shell) 2. 铝壳体喷漆 (Aluminium-shell lacquer cover) 3. 钢壳体镀铬 (Steel shell chromium cover) 4. 黑色表圈 (Black ring) 5. 不可动防尘帽 (Dust-proof cap can not be moved) 6. 可动防尘帽 (Dustproof cap can be moved) 7. 止动压板 (Stop flat) 8. 内公差指示器 (Inside tolerance indicator) 9. 外公差指示器 (Outside tolerance indicator) 10. 防震 (Shock proof) 11. 带钻 (Jeweled) 12. 下轴套防水防尘 (Lower part sleeve dustproof and waterproof) 13. 双面读数 (Double readout) 14. 转数指针在左上方 (Count pointer on left-above) 15. 带提升机构 (Elevator mechanism) 16. 无防尘帽 (Without dustproof cap) 17. 螺钉止动 (Stop screw)

主要特点:

- 量杆由淬硬不锈钢制成
- 结构设计合理
- 用于对称偏差指示

FEATURES:

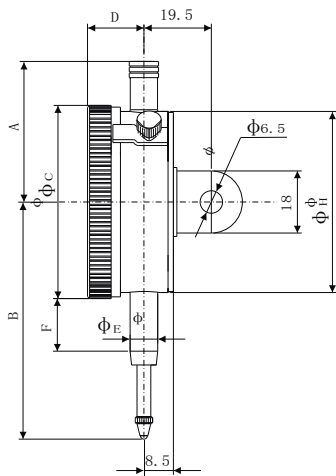
- Spindle is made of hardened stainless steel
- Proper design of mechanism
- For balanced dial variation indicators



321-813LT



321-814LT



货号 Order No.	A mm	B mm	ΦC mm	D mm	ΦE mm/inch	F mm	ΦH mm
321-812	36	47.5	41	14	8	14.5	35
321-811	36	47.5	41	14	8	14.5	35
321-831	44	70	60	15.5	8	16.5	52
321-832	44	70	55	15.5	8	16.5	52
321-813LT	35	54	43	14	8	15	
321-814LT	41.5	68.5	61	14.8	8	13	
321-814-1LT	41.5	68.5	61	14.8	8	13	
321-813-1LT	35	54	43	14	8	15	
321-811LT	35	54	43	14	8	15	

货号 Order No.	分度值 Readings	测量范围 Measuring mm	表盘读数 Dial reading mm	表圈外径 Ring diameter mm	采用标准 Used standard mm	备注 Remark
321-812	0.01	0.8	40-0-40	Φ41	DIN	LB213(3.5.8.)
321-811	0.01	0.4	20-0-20	Φ41	DIN	LB215(3.5.8.)
321-831	0.01	0.8	40-0-40	Φ60	DIN	LB211.2(3.5.8.)
321-832	0.01	1.8	90-0-90	Φ55	DIN	LB214(3.5.8.)
321-813LT	0.01	0.9	45-0-45	Φ43	UNI	SC44 ANT(2.10.)
321-814LT	0.01	0.9	45-0-45	Φ61	UNI	SC64 ANT(2.10.)
321-814-1LT	0.01	0.9	45-0-45	Φ61	UNI	SC64 ANT 4Fori(2.10.) 后盖四孔 (Back with four holes)
321-813-1LT	0.01	0.9	45-0-45	Φ43	UNI	SC44 ANT 4Fori(2.10.) 后盖四孔 (Back with four holes)
321-811LT	0.01	0.4	20-0-20	Φ43	UNI	SC425 ANT 4Fori(2.10.) 后盖四孔 (Back with four holes)

1. 铝壳体 (Aluminium shell) 2. 铝壳体喷漆 (Aluminium-shell lacquer cover) 3. 钢壳体镀铬 (Steel shell chromium cover) 4. 黑色表圈 (Black ring) 5. 不可动防尘帽 (Dust-proof cap can not be moved) 6. 可动防尘帽 (Dustproof cap can be moved) 7. 止动压板 (Stop flat) 8. 内公差指示器 (Inside tolerance indicator) 9. 外公差指示器 (Outside tolerance indicator) 10. 防震 (Shock proof) 11. 带钻 (Jeweled) 12. 下轴套防水防尘 (Lower part sleeve dustproof and waterproof) 13. 双面读数 (Double readout) 14. 转数指针在左上方 (Count pointer on left-above) 15. 带提升机构 (Elevator mechanism) 16. 无防尘帽 (W-without dustproof cap) 17. 螺钉止动 (Stop screw)

护桥式内径指示表

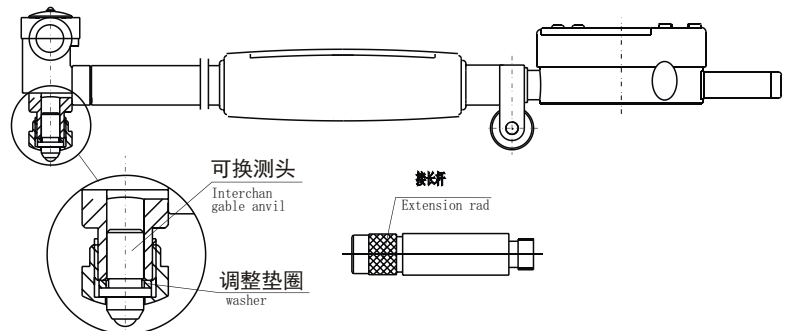
PROTECTIVE-BRIDGE DIAL BORE GAUGES

主要特点:

- 适用于比较法测量工件的内径
- 本系列内径指示表备有优良的导向护桥，自定心准确可靠
- 测量头一端为活动测头，另一端为根据被测孔径不同而变换的可换测头
- 用户根据需要对配置的指示表有多种选择

FEATURES:

- The bore gauges are used to measure internal dimensions of work pieces by comparative method
- These series bore gauges are equipped with a good guiding protective-bridge which can be self-centering exactly and reliably
- The moveable anvil on one side and an interchangeable on another side, which serves for setting the bore diameters
- There are many types of dial indicators for choice according to the needs of customers



货号 Order No	测量范围 Measuring mm/inch	测量深度 Measuring Depth mm/inch	采用标准 Used standard	备注 Remarks
328-131X	Φ10-Φ18	100	GB	LB555C A×9 B×1
328-132X	Φ18-Φ35	130	GB	LB556E A×9 B×2
328-133X	Φ35-Φ50	150	GB	LB557D A×6 B×2
328-134X	Φ50-Φ160	150	GB	LB559D A×13 B×4 C×1
328-135X	Φ160-Φ250	400	GB	LB561D A×9 B×4 C×1
328-136X	Φ250-Φ450	400	GB	LB562D A×11 B×4 C×2
328-151X	Φ.4"-Φ.7"	4"	英制表标准	LB555CY A×7 B×1
328-152X	Φ.7"-Φ1.4"	5"	英制表标准	LB556EY A×8 B×3
328-153X	Φ1.4"-Φ2.5"	6"	英制表标准	LB557DY A×6 B×4
328-154X	Φ.2"-Φ.6"	6"	英制表标准	LB559DY A×11 B×4 C×1
328-155X	Φ.6"-Φ.10"	16"	英制表标准	LB561DY A×11 B×4 C×1
328-156X	Φ.10"-Φ.16"	16"	英制表标准	LB562DY A×11 B×4 C×1

备注栏中的A B C符号的内容如下所示：

Please see the following A B C for in the above table

A可换测头(Interchangeable contact point) B调整垫圈(Adjustable Washers) C接长杆(Extension Rod)

定货号的最末一位的X为该内径表所配的指示表类型，如：若购测量范围Φ10-Φ18mm的内径表，选配E型，0.001mm×±0.05mm的指示表，则该内径表的定货号为：328-131E。

"X" at the end of Order No. stands for a type of Dial gauge coming with Dial Bore Gauge. For example, if one purchases Dial Bore Gauge (Φ10-Φ18mm) and choose type E as Dial gauge (E: 0.001 mm×±0.05mm), Order number for this dial bore gage is 328-131E

选配指示表类型

The following Dial & Digital gauges are optional

配表类型 Type	表型号 Model No.	读数×量程 Reading×Range mm/inch	备注 Remarks
A	LB211	0.01×3	表盘直径 Face Diameter Φ40 货号 Order NO. 321-111
B	LB217	0.01×3	表盘直径 Face Diameter Φ60 货号 Order NO. 321-111-2
C	LB224.5	0.01×5	表盘直径 Face Diameter Φ40 货号 Order NO. 321-130
D	LB262	0.0005" ×0.25"	表盘直径 Face Diameter Φ2.362" 货号 Order NO. 321-232
E	LB110	0.001×±0.05	表盘直径 Face Diameter Φ2.362" 货号 Order NO. 320-105A
F	LB112	0.001×1	表盘直径 Face Diameter Φ55 货号 Order NO. 320-162
G	SXB254A	0.01/0.0005" 6.5/0.28"	M型数显表 Digital gauge Type M
H	SXB253A	0.01/0.0025" 12.7/0.5"	M型数显表 Digital gauge Type M
J	SXB153A	0.001/0.00005" 6.5/0.25"	M型数显表 Digital gauge Type M
K	SXB152A	0.001/0.00005" 12.7/0.5"	M型数显表 Digital gauge Type M



涨簧式内径指示表

EXPANDING HEAD DIAL BORE GAUGES

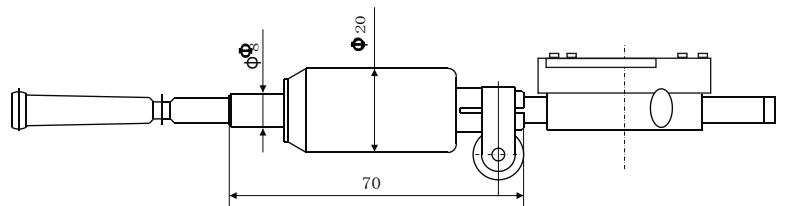


主要特点:

- 附有定深套，测量方便，快速
- 测头部为球状，能自动自定心测量
- 本产品属弹性测头经过尖端带锥度的探针推动指示表量杆的精度测量仪器

FEATURES:

- With location depth attachment, easily and quickly measure
- The tip of anvil is spherical so that can be self-centering measuring the bore
- The product is precision measuring instrument. The spring head push spindle of dial gauge to movement via the pin with taper point end



货号 Order No.	测量范围 Measuring mm/inch	测量深度 Measuring Depth mm/inch	采用标准 Used standard	备注 Remarks
328-121X	Φ1.0-Φ2.0	13.17	JB	LB551A
328-122X	Φ2.0-Φ3.5	17.25	JB	LB552A
328-123X	Φ3.5-Φ6.0	25.41	JB	LB553A
328-126X	Φ6.0-Φ10.0	41.50	JB	LB554A

定货号的最后一位的X为该内径表所配的指示表类型，如：若购测量范围Φ10mm-Φ18mm的内径表，选配E型，0.001mm×±0.05mm的指示表，则该内径表的定货号为：328-131E

X at the end of Order No. stands for a type of Dial gauge coming with Dial Bore Gauge. For example, if one purchases Dial Bore Gauge (Φ10-Φ18mm) and choose type E as Dial gauge (E: 0.001 mm×±0.05mm), Order No. for this dial bore gage is 328-131E

选配指示表类型

The following Dial & Digital gauges are optional

配表类型 Type	表型号 Model No.	读数值×量程 Reading×Range mm/inch	备注 Remarks
A	LB211	0.01×3	表盘直径 Face Diameter Φ40 货号 Order NO. 321-111
B	LB217	0.01×3	表盘直径 Face Diameter Φ60 货号 Order NO. 321-111-2
C	LB224.5	0.01×5	表盘直径 Face Diameter Φ40 货号 Order NO. 321-130
D	LB262	0.0005" × 0.25"	表盘直径 Face Diameter Φ2.362" 货号 Order NO. 321-232
E	LB110	0.001 × ± 0.05	表盘直径 Face Diameter Φ2.362" 货号 Order NO. 320-105A
F	LB112	0.001 × 1	表盘直径 Face Diameter Φ55 货号 Order NO. 320-162
G	SXB254A	0.01/0.0005" 6.5/0.28	M型数显表 Digital gauge Type M
H	SXB253A	0.01/0.0025" 12.7/0.5	M型数显表 Digital gauge Type M
J	SXB153A	0.001/0.00005" 6.5/0.25	M型数显表 Digital gauge Type M
K	SXB152A	0.001/0.00005" 12.7/0.5	M型数显表 Digital gauge Type M

测头尺寸及测量范围

Anvil Diameter And Measuring Range

测头尺寸 Anvil Diameter mm	测量范围 Measuring mm	测量深度 Measuring Depth mm	测头尺寸 Anvil Diameter mm	测量范围 Measuring mm	测量深度 Measuring Depth mm
Φ1.00	0.95-1.10	13	Φ3.50	3.35-3.70	25
Φ1.10	1.05-1.20	13	Φ3.75	3.60-3.95	25
Φ1.20	1.15-1.35	13	Φ4.00	3.85-4.20	25
Φ1.35	1.30-1.50	13	Φ4.50	4.10-4.70	41
Φ1.50	1.45-1.65	13	Φ5.00	4.60-5.20	41
Φ1.75	1.65-1.95	17	Φ5.50	5.10-5.70	41
Φ2.00	1.85-2.20	17	Φ6.00	5.60-6.20	41
Φ2.00	1.85-2.20	17	Φ6.00	5.60-6.20	41
Φ2.25	2.15-2.45	17	Φ6.50	6.10-6.70	41
Φ2.50	2.35-2.70	25	Φ7.00	6.60-7.20	41
Φ2.75	2.60-2.95	25	Φ8.00	7.10-8.30	50
Φ3.00	2.85-3.20	25	Φ9.00	8.10-9.40	50
Φ3.25	3.10-3.45	25	Φ10.00	9.30-10.50	50
Φ3.50	3.35-3.70	25			



BORE GAGE CALIBRATION MASTER

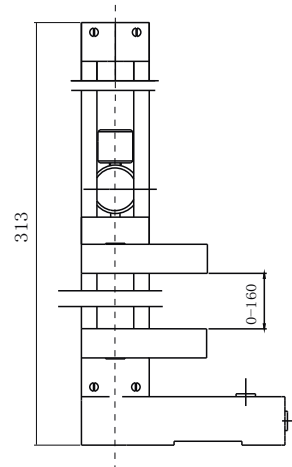
校准器

主要特点:

- 用量块组成被测内径尺寸，代替校对环作内径指示表示值校对，具有万能性
- 本附件可立式，卧式两用

FEATURES:

- Uses standard gauge block for calibrating any bore diameter. Replace calibration ring and is universally applicable
- Uses the accessory either vertical or horizontal measuring

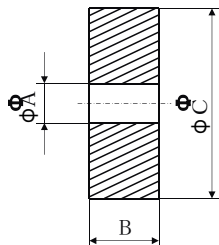


货号 Order No.	测量范围 Measuring mm/inch	备注 Remarks
723-601	0-160	(LB070) 内径指示表附件

校对环规 CALIBRATION RINGS



023-312



内径指示表选购件
Optional Accessories

主要特点:

- 内径指示表示值校对
- 高硬度、耐磨损，内孔精研

FEATURES:

- Used for zero adjustment of dial bore gauges
- Special wear-resistant steel. Hardened and abraded



货号 Order No.	尺寸 Size mm			允许误差 Permissible Error
	ΦA	ΦB	ΦC	μm
023-301	1.00	4.0	20	±1.5
023-302	1.10	4.0	20	±1.5
023-303	1.20	4.0	20	±1.5
023-304	1.30	4.0	20	±1.5
023-305	1.50	4.0	20	±1.5
023-306	1.75	5.0	25	±1.5
023-307	2.00	5.0	25	±1.5
023-308	2.25	5.0	25	±1.5
023-309	2.50	7.0	25	±1.5
023-310	2.75	7.0	25	±1.5
023-311	3.00	7.0	25	±1.5
023-312	3.50	7.0	25	±1.5
023-313	3.75	7.0	25	±1.5
023-314	4.00	7.0	25	±1.5
023-315	4.50	7.0	25	±1.5
023-316	5.00	7.0	25	±1.5
023-317	5.50	7.0	25	±1.5
023-318	6.00	7.0	25	±1.5
023-319	6.50	7.0	25	±1.5
023-320	7.00	7.0	25	±1.5
023-321	8.00	10.0	32	±1.5
023-322	9.00	10.0	32	±1.5
023-323	10.00	10.0	32	±1.5
023-324	10.00	12.0	30	±2.0
023-325	18.00	20.0	45	±2.0
023-326	35.00	25.0	70	±2.0
023-327	50.00	30.0	100	±2.0
023-328	100.00	40.0	160	±2.0
023-329	160.00	60.0	240	±3.0
023-330	250.00	60.0	370	±3.0

THICKNESS DIAL GAUGES 厚度表

主要特点:

- 轻巧便捷, 使用方便
- 测量效率高
- 测量珠宝、皮革、金属薄板、纸张、薄膜、金属丝和类似材料的厚度

FEATURES:

- Light and handy, easy to use
- High measuring efficiency
- For measuring thickness of pear and jewels, leather, metal sheet, paper, film, metal thread and similar materials



325-301



325-101



325-102

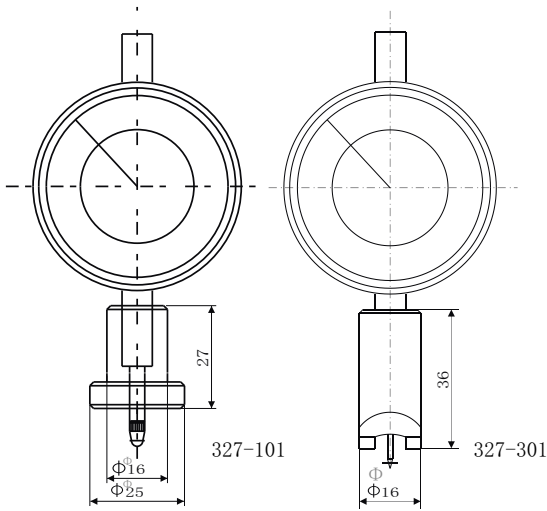


325-181



货号 Order No	分度值 Readings mm	测量范围 Measuring mm	采用标准 Used standard	备注 Remarks
325-181	0.1	0-10	JB	LB637上下测头为针状 Needle measuring point
325-101	0.1	0-10	JB	LB638 凸形玻璃、黑色圆锥形表圈 Protuberant glass, black taper plastic ring
325-102	0.1	0-20	JB	LB641
325-103	0.1	0-20	JB	LB643 测瓷砖专用 Use for measuring ceramic tile
325-104	0.1	0-20	JB	LB643 黑色表圈 Black plastic ring
325-301	0.05	0-20	用户技术条件	LB630 内厚规 Gages for measuring ball thick
326-102	0.01	0-10	JB	LB636 凸形玻璃、黑色圆锥形表圈 Protuberant glass, black taper plastic ring
326-120	0.01	0-10	JB	LB639 带提升机构 Elevator mechanism

深度百分表 DEPTH DIAL GAUGES READING IN 0.01mm



主要特点:

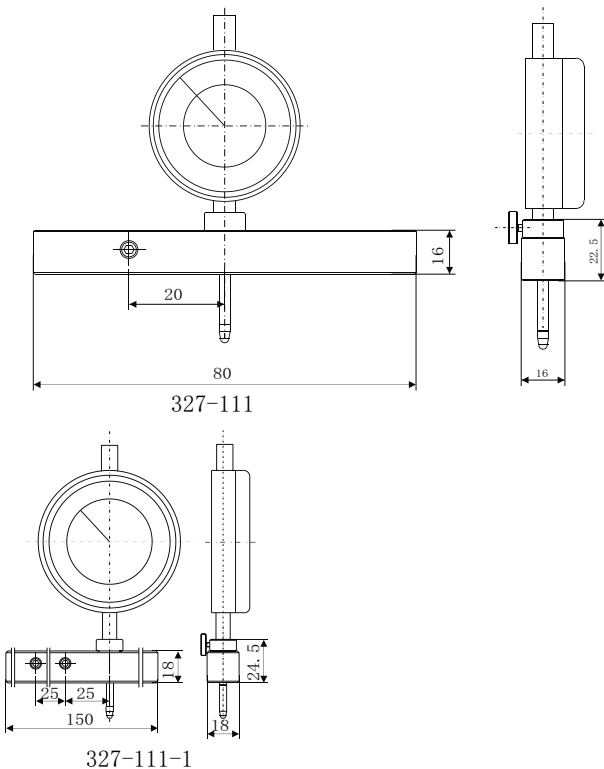
- 高硬度和高平面的基准面
- 327-301能非常方便的测量电路板及刻制板的深度

FEATURES:

- High hardness and high flatness base
- 327-301 It is convenient for measuring the depth of circuit board and engraving board

货号 Order No.	分度值 Readings mm	测量范围 Measuring mm	表盘读数 Dial reading mm	允许误差 Permissible Error mm	备注 Remarks
327-101	0.01	0-10	0-100	0.02	LB731
327-301	0.01	0-5	0-100	0.02	Lb721

深度百分表 DEPTH DIAL GAUGES READING IN 0.01mm



主要特点:

- 百分表在基板上可以移位, 使用方便
- 有25、50和100mm长度的接长杆, 可测量深度0-200mm
- 高硬度和高平面的基准面

FEATURES:

- Measuring is convenient because the dial indicator is moveable on the base
- Interchangeable rods (25, 50, 100mm) can be inspecting depths 0-200mm
- Bottom surface of the base is hardness, ground and lapped for highest degree of flatness

货号 Order No.	分度值 Readings mm	测量范围 Measuring mm	表盘读数 Dial reading mm	接长杆 Extension rods mm	允许误差 Permissible Error mm	量表量程 Measuring range of dial gauge mm	备注 Remarks
327-111	0.01	0-200	0-100	25, 50, 100	0.03	25	LB742
327-111-1	0.01	0-200	0-100	50, 100	0.04	50	LB751

DIAL GAUGES

TRESNA®

DIAL GAUGES FOR MEASURING FORCE
DIAL GAUGES FOR MEASURING HARDNESS

测力专用表及测硬专用表



324-302



324-203

货号 Order No.	A mm	B mm	ΦC mm	D mm	ΦE mm/inch	F mm	ΦH mm
324-201	45	43.5	55	14	8	16	50
324-301	35	60	60	16.5	8	17.35	53
324-302	35	60	60	16.5	8	17.35	53
324-202	31	66	60	16.5	8	42	50
324-203	31	66	60	13.4	8	42	50
324-204	31	66	60	13.4	8	42	50

货号 Order No.	分度值 Readings mm/inch	测量范围 Measuring mm/inch	表盘读数 Dial reading mm	表圈外径 Ring diameter mm	备注 Remark
324-301	0.01	10	0-100	Φ55	LB710(1.6.9.17)测力专用表 dial gauges for measuring force
324-302	0.001"	1"	0-100	Φ60	LB711(1.6.9.17)硬度表, 英制 hardness gauges, imperial system
324-202	0.025	2.5	0-100	Φ60	LB713(1.16) 硬度表, 公制 hardness gauges, metric system
324-203	0.01	10	0-100	Φ60	LB714(1.)测力专用表, 10N、20N、30N、50N、100N、200N、300N dial gauges for measuring force, 10N, 20N, 30N, 50N, 100N, 200N, 300N
324-204	0.01	10	0-100	Φ60	LB715(1.) 测力专用表, 量杆Φ4.5 dial gauges for measuring force, spindle Φ4.5
324-301	0.01	10	0-100	Φ60	LB716(1.) 测力专用表, 量杆Φ4.5 dial gauges for measuring force, spindle Φ4.5

锯齿表、三维表、三用卡表

DIAL GAUGE FOR MEASURING SAW TOOTH,
THREE-DIMENSIONAL GAUGE AND JEWEL GAUGE



货号 Order No.	分度值 Readings mm/inch	测量范围 Measuring mm/inch	表盘读数 Dial reading mm	备注 Remark
324-701	0.001"	0.08"	0-40	LB760 测锯齿专用 dial gauges for measuring saw tooth
329-111	0.01	2-0-2	20-0-20	LB717A 可在X、Y、Z任何方向基准面对刀轴中心测量 measuring the central axis of cutter any direction of X、Y、Z
324-341	0.1	0-20	0-10	FJKB 常用于测量宝石 Usually to measure jewelry

卡尺指示表 DIAL GAUGES OF DIAL CALIPER



闭式尺框 I、II型罩壳 (双防震)

Closed form caliper frame-I、II type cover (double shock-proof)

货号 Order No.	分度值 Readings mm/inch	每转量程 mm/inch	配卡尺	备注 Remarks	
331-611	0.02	2	配LC123、LC123.1、LC131(0-150、0-200)	LB342.8	I II
331-601	0.01	1	配LC127、LC127.1、LC133(0-150、0-200)	LB330.3	I II
331-621	0.001"	0.1"	配LC171、LC171.1、LC183(0-6"、0-8")	LB372	I II
331-612	0.02	2	配LC141(0-300)	LB345	I
331-602	0.01	1	配LC143(0-300)	LB338	I
331-622	0.001"	0.1"	配LC193(0-12)	LB375	I

卡尺指示表 DEPTH DIAL GAUGES READING IN 0.01mm



闭式尺框III型罩壳 (单、双防震)

Closed form caliper frame-III type cover (single, double shock-proof)

货号 Order No.	分度值 Readings mm/inch	每转量程 mm/inch	配卡尺	备注 Remarks	
331-711	0.02	2	配LC125(0-150)	LB348	III
331-712	0.02	2	配LC125A(0-150)	LB348A	III
331-701	0.01	1	配LC126(0-150)	LB339	III
331-720	0.01	1	配LC126A(0-150)	LB339A	III
331-721	0.001"	0.1"	配LC175(0-6")	LB377	III
331-722	0.001"	0.1"	配LC175A(0-6")	LB377A	III

DIAL GAUGES

TRESNA®

DIAL GAUGES OF NC MACHINE

数控机床对刀表



货号 Order No.	分度值 Readings mm	量程 Measuring mm	表盘读数 Dial reading	表圈外径 Ring Diameter mm	采用标准 Used standard	备注 Remarks
324-112-1	0.01	4	0-100	Φ32	GB	LB225A(3.)
324-112	0.01	4	0-100	Φ36	GB	LB225.1(3.)插片式 insertion flat type
324-112-2	0.01	4	50-0-50	Φ36	GB	LB225.2(3.)转环式 rotating ring type
324-114	0.01	4	0-100	Φ55	GB	LB228(1.4.)有测量头, 有后盖, 无固定块波动 With measuring point, with back, without fixed block for moving
324-115	0.01	4	0-100	Φ55	GB	LB228(1.4.)无测量头, 无后盖, 有固定块波动 without measuring point, without back, with fixed block for moving



DIAL GAUGES READING IN 0.1mm FOR DIESEL AND PUMP

十分表



货号 Order No.	分度值 Readings mm	量程 Measuring mm	表盘读数 Dial reading	表圈外径 Ring Diameter mm	采用标准 Used standard	备注 Remarks
324-400	0.1	10	10-0	Φ60	企业标准	LB701 (3.4.)
324-401	0.1	40	0-100	Φ60	企业标准	LB250 (1.9.17) 柴油机泵专用, 指南针 dial gauges for diesel manufacture, double pointers
324-501	0.1	30	0-100	Φ60	企业标准	LB255 (1.9.17) 油泵专用 dial gauges for pump manufacture

1. 铝壳体 (Aluminium shell) 2. 铝壳体喷漆 (Aluminium-shell lacquer cover) 3. 钢壳体镀铬 (Steel shell chromium cover) 4. 黑色表圈 (Black ring) 5. 不可动防尘帽 (Dust-proof cap can not be moved) 6. 可动防尘帽 (Dustproof cap can be moved) 7. 止动压板 (Stop flat) 8. 内公差指示器 (Inside tolerance indicator) 9. 外公差指示器 (Outside tolerance indicator) 10. 防震 (Shock proof) 11. 带钻 (Jeweled) 12. 下轴套防水防尘 (Lower part sleeve dustproof and waterproof) 13. 双面读数 (Double readout) 14. 转数指针在左上方 (Count pointer on left-above) 15. 带提升机构 (Elevator mechanism) 16. 无防尘帽 (Without dustproof cap) 17. 螺钉止动 (Stop screw)

卡尺指示表 DIAL GAUGES OF DIAL CALIPER



开式尺框 I型罩壳 (单、双防震)

Open form caliper frame-I type cover (single, double shock-proof)

货号 Order No.	分度值 Readings mm/inch	每转量程 mm/inch	配卡尺	备注 Remarks	
331-301	0.02	2	配LC121、LC135(0-150、0-200)	LB341	I
331-301-1	0.02	2	配LC121A、LC135A(0-150、0-200)	LB341A	I
331-101	0.01	1	配LC122、LC137(0-150、0-200)	LB330.1	I
331-101-1	0.01	1	配LC122A、LC137A(0-150、0-200)	LB330.1A	I
331-501	0.001"	0.1"	配LC170、LC181(0-6"、0-8")	LB370	I
331-501-1	0.001"	0.1"	配LC170A、LC181A(0-6"、0-8")	LB370A	I
331-302	0.02	2	配LC145(0-300)	LB343.1	I
331-302-1	0.02	2	配LC145A(0-300)	LB343.1A	I
331-102	0.01	1	配LC147(0-300)	LB337	I
331-102-1	0.01	1	配LC147A(0-300)	LB337A	I
331-502	0.001"	0.1"	配LC191(0-12")	LB371	I
331-502-1	0.001"	0.1"	配LC191A(0-12")	LB371A	I

闭式尺框 I、II型罩壳 (单防震)

Closed form caliper frame-I、II type cover (single shock-proof)

货号 Order No.	分度值 Readings mm/inch	每转量程 mm/inch	配卡尺	备注 Remarks	
331-301A	0.02	2	配LC123、LC123.1、LC131(0-150、0-200)	LB342.8	I II
331-101A	0.01	1	配LC127、LC127.1、LC133(0-150、0-200)	LB330.3	I II
331-501A	0.001"	0.1"	配LC171、LC171.1、LC183(0-6"、0-8")	LB372	I II
331-302A	0.02	2	配LC141(0-300)	LB345	I
331-102A	0.01	1	配LC143(0-300)	LB338	I
331-502A	0.001"	0.1"	配LC193(0-12)	LB375	I

OTHER INDICATORS

TRESNA®

140-144



145-147

